



VICTORIA BOLT

POWERED BY
exp™ UK

@ victoria.bolt@exp.uk.com

🌐 victoriabolt.exp.uk.com

📞 07415 758 109

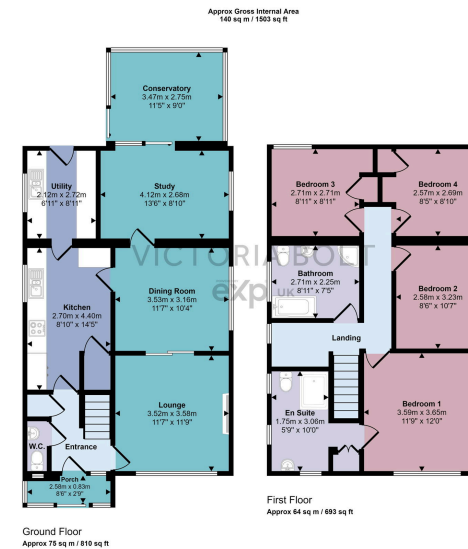
Cot Hill, Plympton
Guide Price £415,000

4 3 3



- Four DOUBLE bedroom detached family home
- Spacious conservatory
- Good size study
- Family bathroom with separate shower replaced 3 years ago
- Driveway for several cars
- Lounge & Separate dining room
- Fitted kitchen and separate utility room
- Master bedroom with ensuite
- Landscaped corner plot garden
- To arrange a viewing, please quote VB0375





This floorplan is only for illustrative purposes and is not to scale. Measurements of rooms, doors, windows, and any items are approximate and no responsibility is taken for any error, omission or mis-statement. Sizes of items such as bathroom suites are representations only and may not look like the real items. Made with MakeSnappy 360.

To arrange a viewing, please quote VB0375. This spacious 'Stanbury' built 4-bedroom detached home sits on a corner plot with a large driveway for several cars. The entrance hall leads to a WC, storage cupboard, fitted kitchen, utility room, and a cosy lounge with a decorative fireplace. The home also includes a separate dining room, a study, and a bright conservatory with garden views. Upstairs are three double bedrooms (two with storage), a master bedroom with an en-suite, and a family bathroom. The rear garden features a lush lawn, mature shrubs, decking, and a paved area for outdoor enjoyment.

